

TABLE OF CONTENTS

Girls 2

 Gown 2



GIRLS

GOWN

PARTY WEAR GOWN FOR GIRL

Make your little girl the belle of the ball with our exquisite Party Wear Gown, a stunning ensemble designed to turn heads and steal hearts! This elegant gown features a mesmerizing design that's perfect for special occasions and memorable moments.

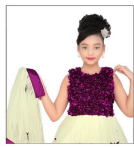
Product Details:

- Product: Party Wear Gown for Girl
- Design: Exquisite gown crafted for special occasions, featuring a mesmerizing design and flowing silhouette
- Material: Made from premium-quality fabric for luxurious comfort and durability
- Color Options: Available in a range of beautiful colors to suit every taste and preference
- Size Options: Various sizes available to fit different ages and body types

[Read More](#)

SKU: N/A





**JACKET
GOWN**



D.No.-1533-241

24x34



JACKET GOWN FOR GIRLS

Product Name: Royal Elegance Jacket Gown for Girls

Color: Royal Blue | Crimson Red

Size Options: Available in various sizes (please specify desired size)

Material: Crafted from premium-quality satin and chiffon fabric, this gown ensures utmost comfort and durability, allowing your little one to twirl with ease all day long.

Design: The Royal Elegance Jacket Gown epitomizes sophistication and grace, making it the perfect choice for any special occasion. Its fitted bodice is adorned with intricate lace detailing, exuding timeless charm, while the flowing skirt adds a touch of regal flair.

Additional Features: Elevating its allure, this gown offers adjustable straps for a personalized fit and a satin lining for luxurious comfort. Complete with a matching satin bow sash that cinches the waist elegantly, this gown also includes a detachable flower brooch that can be pinned to the jacket for a hint of whimsy.

[Read More](#)

SKU: N/A



GOWN



S. No. - 1522-23

SIZE
22
24
26
28
30
32



BEIDGE COLOR GOWN FOR GIRLS

The Beige Color Gown for Girls features a graceful and charming design, perfect for special occasions and formal events. The gown is typically made from high-quality fabric with a soft and elegant drape, enhancing the overall appeal. It may have a fitted bodice with delicate embellishments or lace details, adding a touch of sophistication. The gown flows beautifully with a flowing or flared skirt, creating a princess-like appearance.

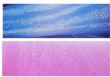
Product Details:

- Product: Beige Color Gown for Girls
- Color: Beige | Sky Blue | Pink
- Design: Graceful and charming with delicate embellishments or lace details
- Occasion: Suitable for weddings, parties, recitals, formal events
- Size Options: 22 | 24 | 26 | 28 | 30 | 32
- Additional Features: May include back zipper or button closure, adjustable straps, matching sash or bow
- Care Instructions: Follow manufacturer's instructions, hand wash or dry clean, avoid bleach, air dry, low heat ironing with a pressing cloth if needed

[Read More](#)

SKU: N/A

GOWN



D. No. - 1520

SIZE
22
24
26
28
30
32

PURPLE GEORGETTE EVENING GOWN

The Purple Georgette Evening Gown showcases a stunning and elegant design, perfect for formal occasions and evening events. The gown is made from lightweight and flowy georgette fabric, which drapes beautifully and adds a touch of sophistication. It typically features a fitted bodice with intricate details such as lace, sequins, or embellishments, enhancing its overall allure. The gown may have various sleeve options, such as sleeveless, short sleeves, or long sleeves, depending on the specific design.

Product Details:

- Product: Purple Georgette Evening Gown
- Color: Purple | Blue
- Material: Georgette fabric
- Design: Elegant and sophisticated with intricate details
- Occasion: Ideal for formal events, galas, proms
- Additional Features: May include back zipper or button closure, defined waistline, subtle train
- Size Options: 22 | 24 | 26 | 28 | 30 | 32
- Care Instructions: Dry clean recommended

[Read More](#)



SKU: N/A

GOWN



SIZE
22
24
26
28
30
32



D. No. 1515



BARBIE GIRLS FULL LENGTH PARTY DRESS

This dress features a stunning and enchanting design inspired by the iconic Barbie brand. It has a fitted bodice with delicate embellishments, such as sequins, beads, or glitter, adding a touch of sparkle and glamour. The dress flows gracefully with a full-length skirt, creating a princess-like appearance that any Barbie fan would adore. The back may have a zipper or button closure for easy dressing.

Product Details:

- Product: Barbie Girls Full-Length Party Dress
- Color: Pink | Blue | Yellow
- Sizes available: 22 | 24 | 26 | 28 | 30 | 32
- Material: High-quality fabric for comfort and durability
- Design: Fitted bodice with delicate embellishments, flowing full-length skirt
- Occasion: Perfect for birthdays, themed parties, costume events
- Additional Features: May include a matching tiara or headband,

- detachable bow or sash, small Barbie-branded purse
- Care Instructions: Hand wash with mild detergent and cold water, avoid bleach, air dry, low-heat ironing if necessary

[Read More](#)

SKU: N/A

GOWN



CHERRISH RED GOWN FOR GIRLS

Product Details:

Product Name: Cherrish Red Gown for Girls

Color: Red | Blue

Size Options: Available in various sizes (please specify desired size)

Material: The gown is made from high-quality fabric, ensuring comfort and durability. Design: The Cherrish Red Gown features an elegant and enchanting design, perfect for special occasions and formal events. It has a fitted bodice with intricate lace or embellishments, adding a touch of glamour.

Additional Features: Some additional features may include a satin or silk lining for extra comfort, adjustable straps, a matching bow or sash, or a detachable flower brooch or belt to enhance the overall look.

[Read More](#)

SKU: N/A



GOWN

SKY BLUE PARTY WEAR GOWN

Crafted with care and precision, this gown is made from high-quality fabrics that offer both comfort and style. The fabric is soft and gentle against the skin, ensuring a comfortable wearing experience for your child throughout the event. The gown features a mesmerizing design that combines sophistication and allure. It may include intricate embroidery, shimmering sequins, or delicate lace detailing, adding a touch of glamour and charm.

Product Details:

Name: Sky blue Party Wear Gown

Sizes: 22 | 24 | 26 | 28 | 32

Available in vibrant colors: Sky Blue | Pink | Purple

Occasion: Party Wear

[Read More](#)

SKU: N/A





INDEX

B

- Barbie Girls Full Length Party Dress 3
- Beidge Color Gown for Girls 2

C

- Cherrish Red Gown for Girls 4

J

- Jacket Gown for Girls 2

P

- Party Wear Gown for Girl 1
- Purple Georgette Evening Gown 3

S

- Sky blue Party Wear Gown 4

